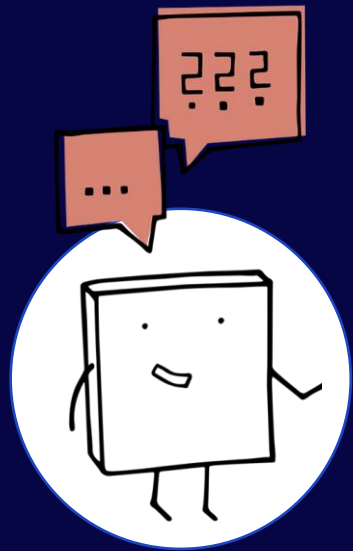


# Engagement Career Development: Moving from Introduction to Identity



## Research Questions:

What are the effects of the UK engagement and impact agenda:

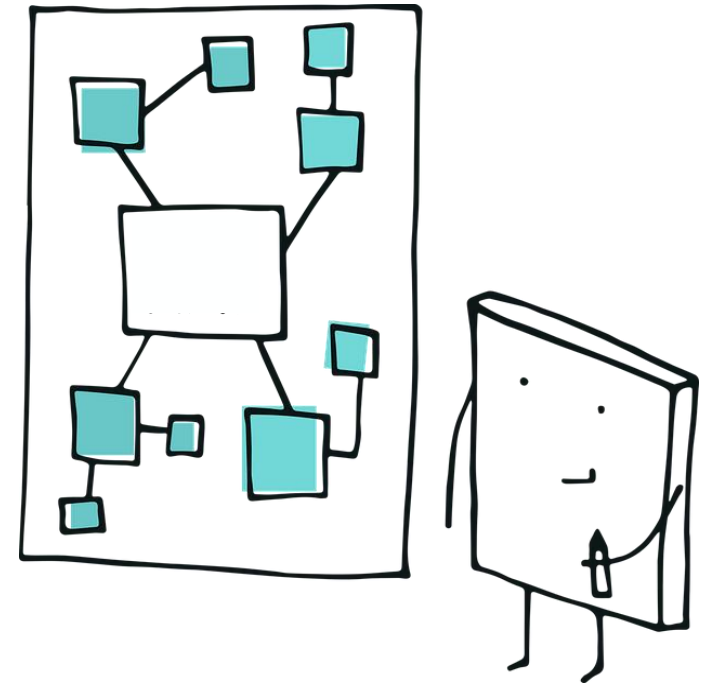
- On priorities, practices and professional development?
- At the level of institutions and individuals?

# UK Engagement and Impact Agenda

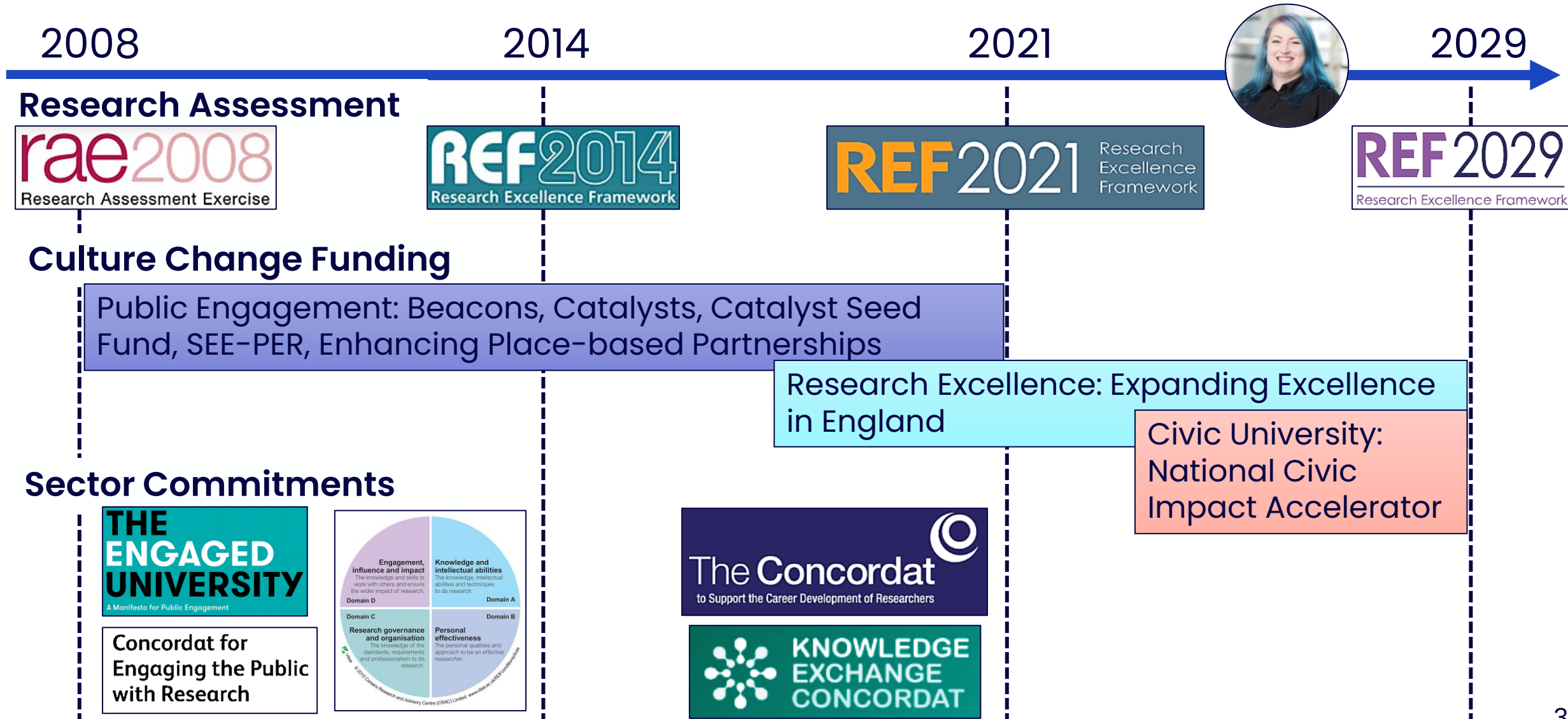
Impact = 'provable effects of research in the real world'

Research impact will:

- be positive or beneficial
- be described by researchers and institutions
- be assessed through narratives and metrics
- factor into research funding allocation



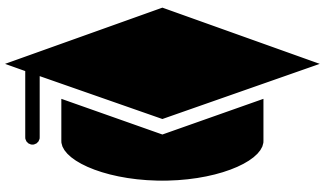
# UK Drivers of Engagement and Impact



# University Type Case Studies

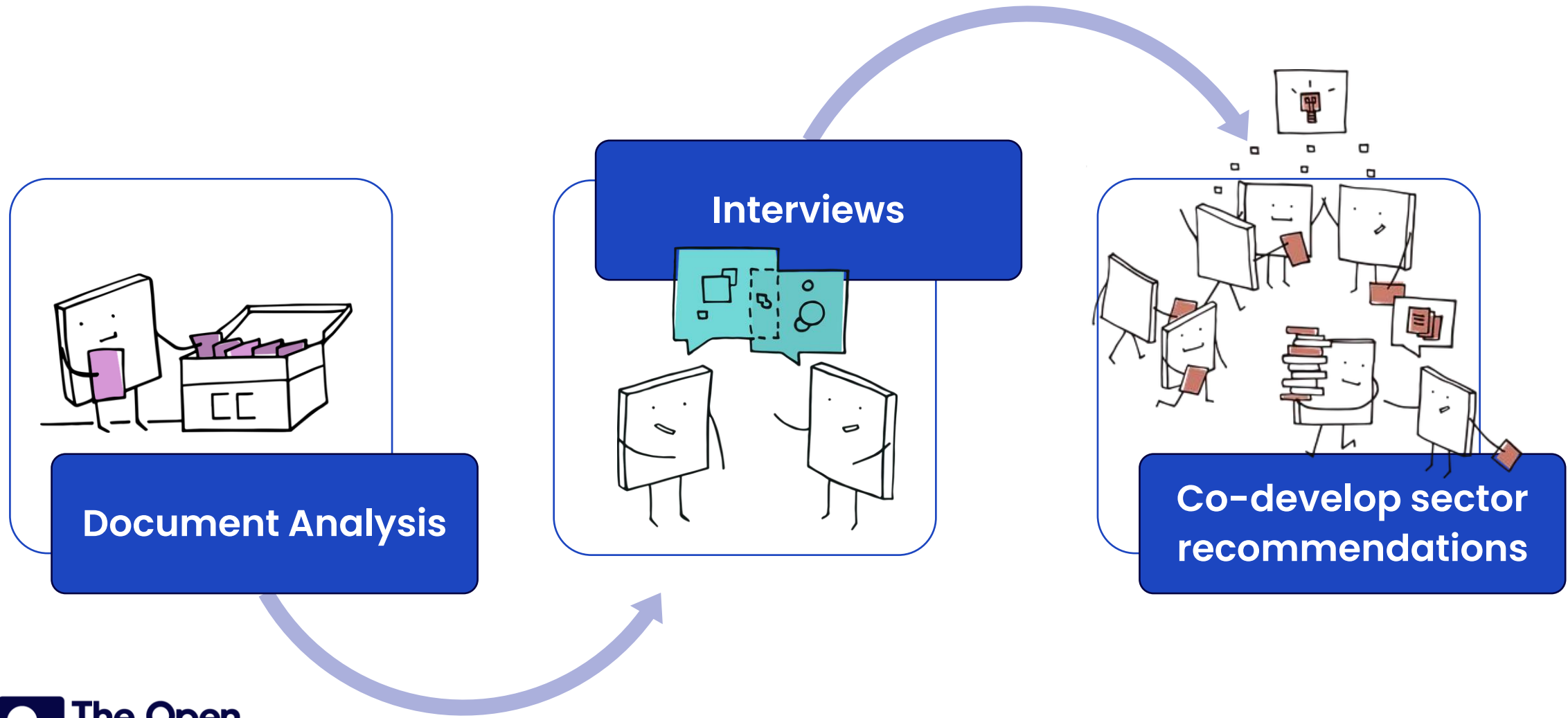
Age	Research Intensity	Research Quality	Culture Change Funding	Sector Commitments and Awards
Red brick (1800-1960)	High (top third)	Very high (top 10%)	<ul style="list-style-type: none"> <li>Public Engagement</li> </ul>	<ul style="list-style-type: none"> <li>PE Manifesto signatory</li> <li>Engage Watermark</li> </ul>
Plate glass (1960-1991)	Very high (top 10%)	High (top third)	<ul style="list-style-type: none"> <li>Public Engagement</li> </ul>	<ul style="list-style-type: none"> <li>PE Manifesto signatory</li> </ul>
Post-92 (1992-2003)	Low (bottom third)	Average	<ul style="list-style-type: none"> <li>Civic University</li> <li>Research Excellence</li> </ul>	

All signatories of the Researcher Development Concordat and awarded HR Excellence in Research



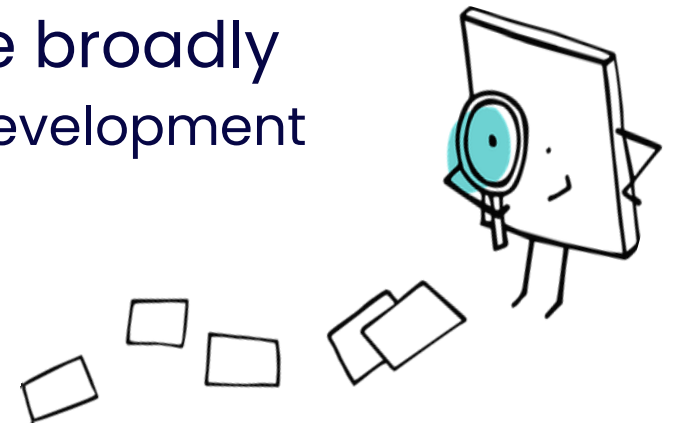
Research intensity and quality rankings from [Complete University Guide 2023](#)

# Planned Research Phases (2023–2026)

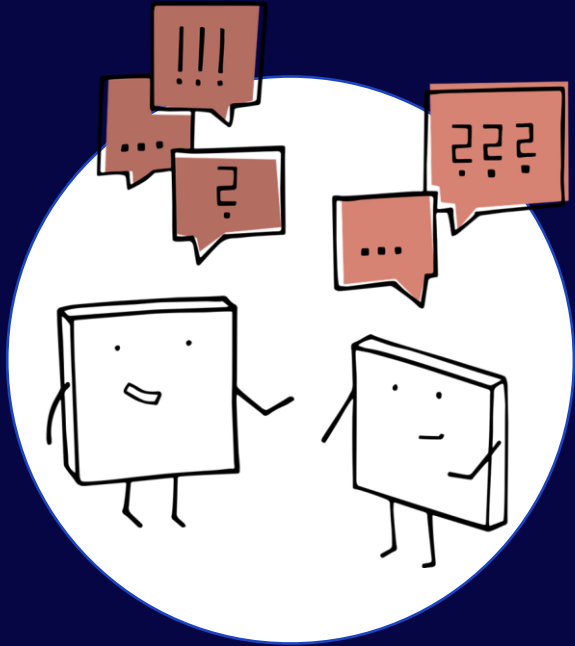


# Findings for Engagement Career Development

- Wide UK institutional commitment to professional development
  - c80% signed [Researcher Development Concordat](#)
  - c70% awarded [HR Excellence in Research Award](#)
- Engagement for impact aligned with range of strategic priorities
  - Values, social responsibility, civic engagement, strategic partnerships
- Engaged practices becoming embedded more broadly
  - Expectation of consultation in university strategy development



# Talk with me about research impact



**Liz Danner**, Postgraduate Researcher  
[liz.danner@open.ac.uk](mailto:liz.danner@open.ac.uk)  
[open.ac.uk/people/ed6533](https://open.ac.uk/people/ed6533)

