



Open Research Online

Citation

Danner, Liz; Holliman, Richard; Gladding, Toni; Khalil, Betul and Grand, Ann (2024). Engaged Career Development in the context of the Research (Engagement and) Impact Agenda. In: Engage Live 2024: Innovating Practice, 01-02 May 2024, Bristol, UK.

URL

<https://oro.open.ac.uk/96105/>

License

(CC-BY-NC-ND 4.0) Creative Commons: Attribution-Noncommercial-No Derivative Works 4.0

<https://creativecommons.org/licenses/by-nc-nd/4.0/>

Policy

This document has been downloaded from Open Research Online, The Open University's repository of research publications. This version is being made available in accordance with Open Research Online policies available from [Open Research Online \(ORO\) Policies](#)

Versions

If this document is identified as the Author Accepted Manuscript it is the version after peer review but before type setting, copy editing or publisher branding

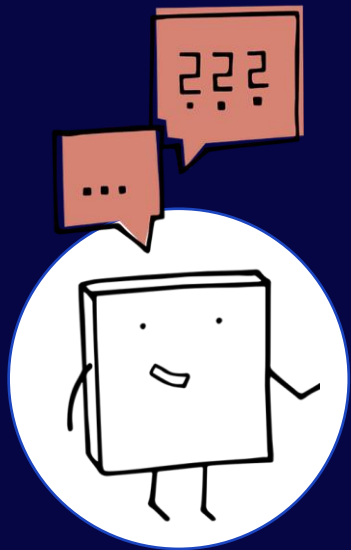
Engaged Career Development

within the context of the UK engagement and impact agenda

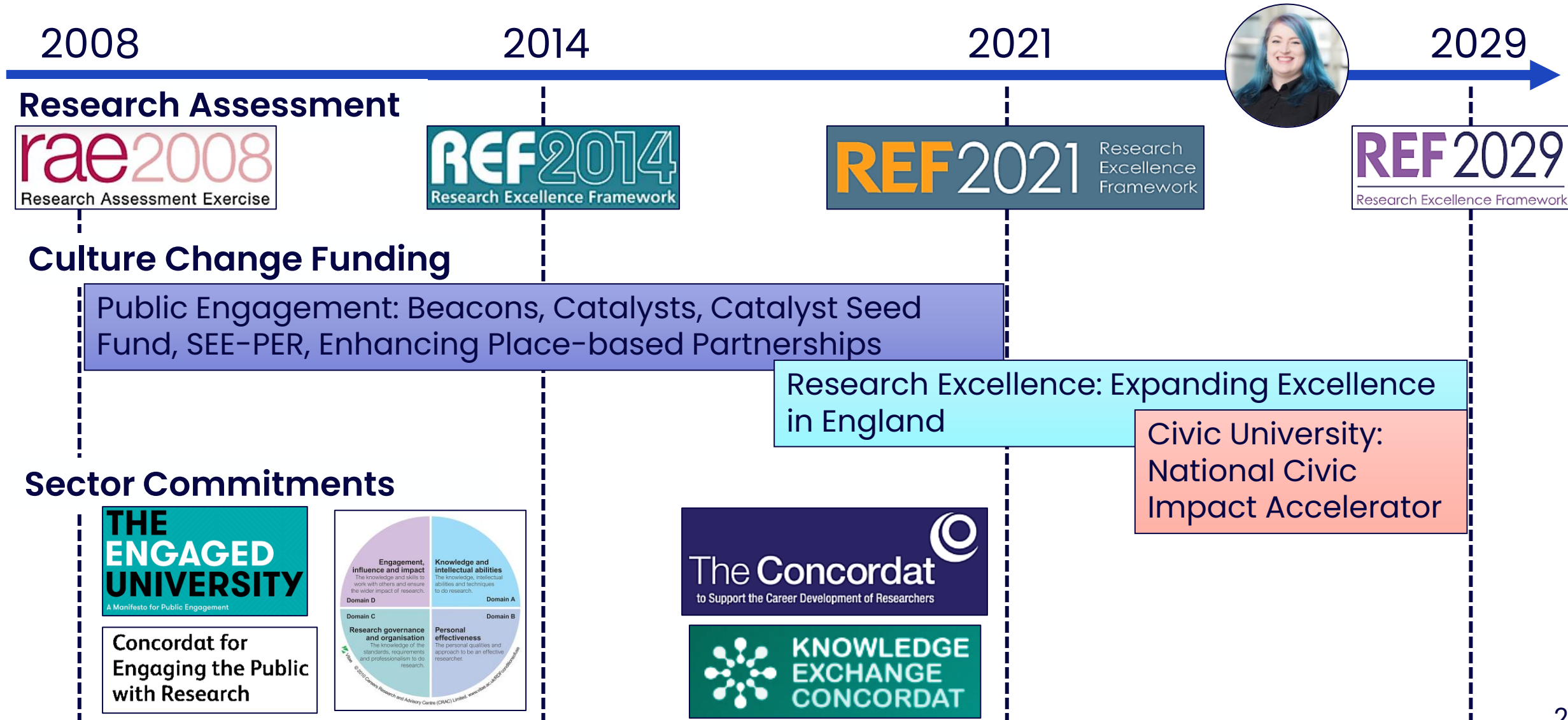
Research Questions:

What are the effects of the UK engagement and impact agenda:

- On priorities, practices and professional development?
- At the level of institutions and individuals?



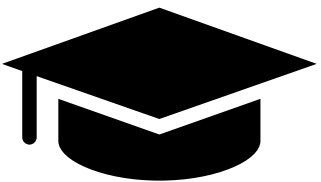
UK Drivers of Engagement and Impact



University Type Case Studies

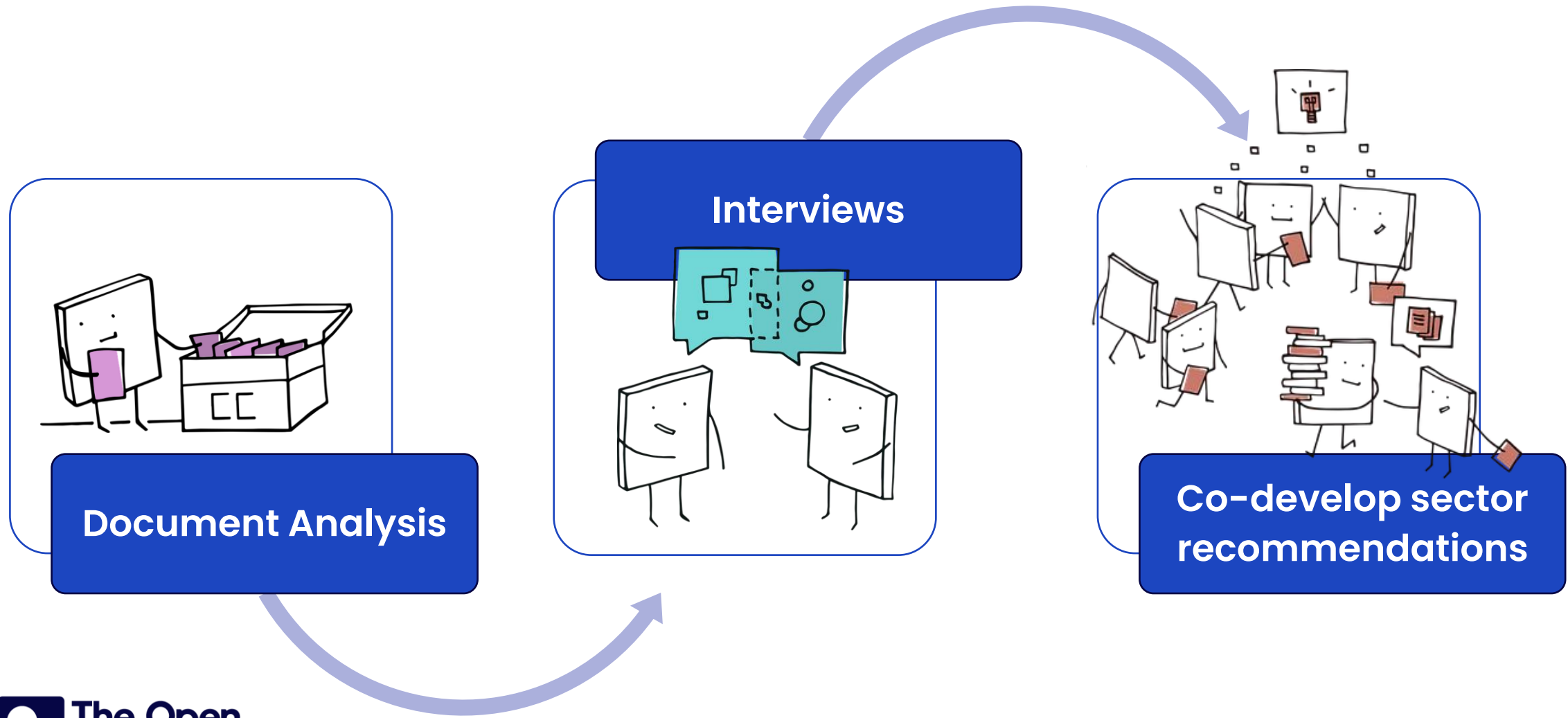
Age	Research Intensity	Research Quality	Culture Change Funding	Sector Commitments and Awards
Red brick (1800-1960)	High (top third)	Very high (top 10%)	<ul style="list-style-type: none">• Public Engagement	<ul style="list-style-type: none">• PE Manifesto signatory• Engage Watermark
Plate glass (1960-1991)	Very high (top 10%)	High (top third)	<ul style="list-style-type: none">• Public Engagement	<ul style="list-style-type: none">• PE Manifesto signatory
Post-92 (1992-2003)	Low (bottom third)	Average	<ul style="list-style-type: none">• Civic University• Research Excellence	

All signatories of the Researcher Development Concordat and awarded HR Excellence in Research



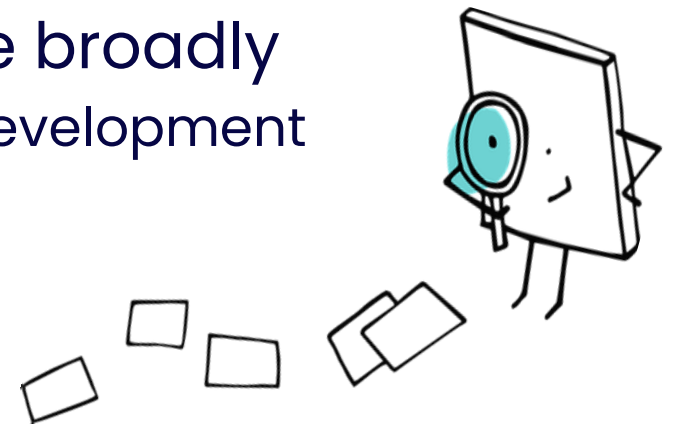
Research intensity and quality rankings from [Complete University Guide 2023](#)

Planned Research Phases (2023–2026)

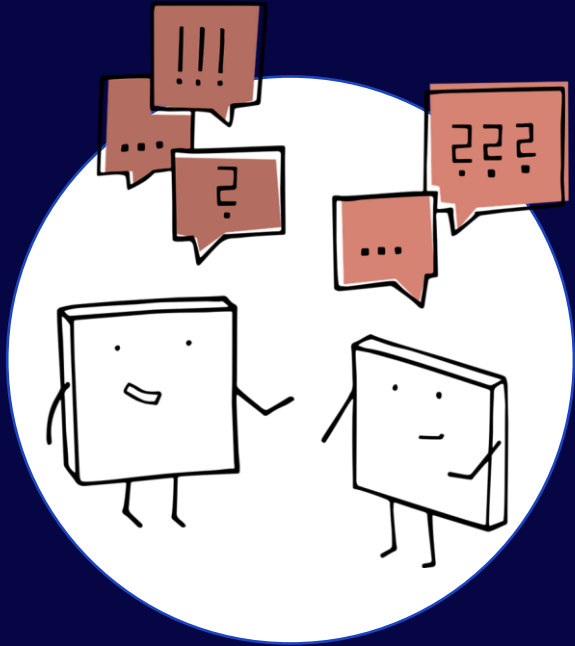


Findings for Engaged Career Development

- Wide UK institutional commitment to professional development
 - c80% signed [Researcher Development Concordat](#)
 - c70% awarded [HR Excellence in Research Award](#)
- Engagement for impact aligned with range of strategic priorities
 - Values, social responsibility, civic engagement, strategic partnerships
- Engaged practices becoming embedded more broadly
 - Expectation of consultation in university strategy development



Talk with me about research impact



Liz Danner, Postgraduate Researcher
liz.danner@open.ac.uk
open.ac.uk/people/ed6533

