



Open Research Online

Citation

Bowen, James; Cheneler, David and Vicary, James (2024). Manufacture and calibration of high stiffness AFM cantilevers. In: European Microscopy Congress 2024, 25-30 Aug 2024, Copenhagen, Denmark.

URL

<https://oro.open.ac.uk/75270/>

License

None Specified

Policy

This document has been downloaded from Open Research Online, The Open University's repository of research publications. This version is being made available in accordance with Open Research Online policies available from [Open Research Online \(ORO\) Policies](#)

Versions

If this document is identified as the Author Accepted Manuscript it is the version after peer review but before type setting, copy editing or publisher branding

Manufacture and calibration of high stiffness silicon cantilevers for atomic force microscopy

James Bowen¹, David Cheneler², James Vicary³

¹Faculty of Science, Technology, Engineering and Mathematics, The Open University, Milton Keynes, MK7 6AA, UK;

²Engineering Department, Lancaster University, Bailrigg, Lancaster, LA1 4YR, UK; ³Nu Nano Ltd, Unit DX, Albert Road, Bristol, BS2 0XJ, UK



1. Introduction

Atomic force microscopy (AFM)^[1] employs microfabricated cantilevers as sensing elements, which are used to measure surface topography and interaction forces. The flexible free end of a cantilever typically presents a pyramidal tip or a colloid probe. Cantilevers are traditionally V-shaped or rectangular and fabricated from Si or Si₃N₄. Laser light reflects off the free end onto a position-sensitive photodetector (PSD). Force measurement studies in the early 1990s^[2-7] were followed by efforts to calibrate the cantilever mechanical properties,^[8-11] centred on understanding the beam mechanics including the flexibility of the free end where the tip or colloid probe is situated.

Force measurements have been applied to a wide variety of scientific and engineering disciplines, and across many industrial sectors. For many studies, the use of colloid probes or chemical functionalisation permits the selective study of a particular material/material interaction, often under non-ambient environments. Force measurements can provide information regarding sample mechanical properties, during the tip/sample approach, as well as adhesive properties, during the tip/sample separation. The spring constant is a measure of the cantilever stiffness, i.e. the resistance to bending. The spring constant of a rectangular cantilever can be estimated using Euler-Bernoulli beam theory. Once calibrated, the spring constant is used to convert normal (i.e. vertical) deflections into normal forces using Hooke's law.

The range of commercially available AFM cantilevers means that spring constants in the range 10⁻³ to 10² N m⁻¹ are available. Deflections in the range 0.1-100 nm are typically measurable on the PSD, and hence forces can be measured in the picoNewton (10⁻¹² N) to microNewton (10⁻⁶ N) range. Accurate control of the beam thickness during fabrication is particularly difficult to achieve, due to the nature of the etching process employed. The width and length of the beam are generally much more reliable and repeatable. Given the sensitivity of the spring constant to the beam thickness, typically proportional to (thickness)³, accurate calibration is a necessity for accurate force measurements.

We are currently calibrating 40 different designs of rectangular AFM cantilever, illustrated in Figure 1, designed using Timoshenko beam theory and manufactured from Si. The cantilever designs incorporate two different nominal widths (35 μm; 50 μm), nine different lengths (100 μm to 550 μm), and two different thicknesses (12.5 μm; 25 μm), exhibiting nominal **spring constants in the range 10² to 10⁵ N m⁻¹**. These high stiffness cantilevers afford researchers the opportunity to utilise the displacement resolution of the AFM whilst undertaking typically-performed mechanical characterisation measurements: **adhesion, indentation, and tribological testing are now possible using normal loads approaching 1 mN.**

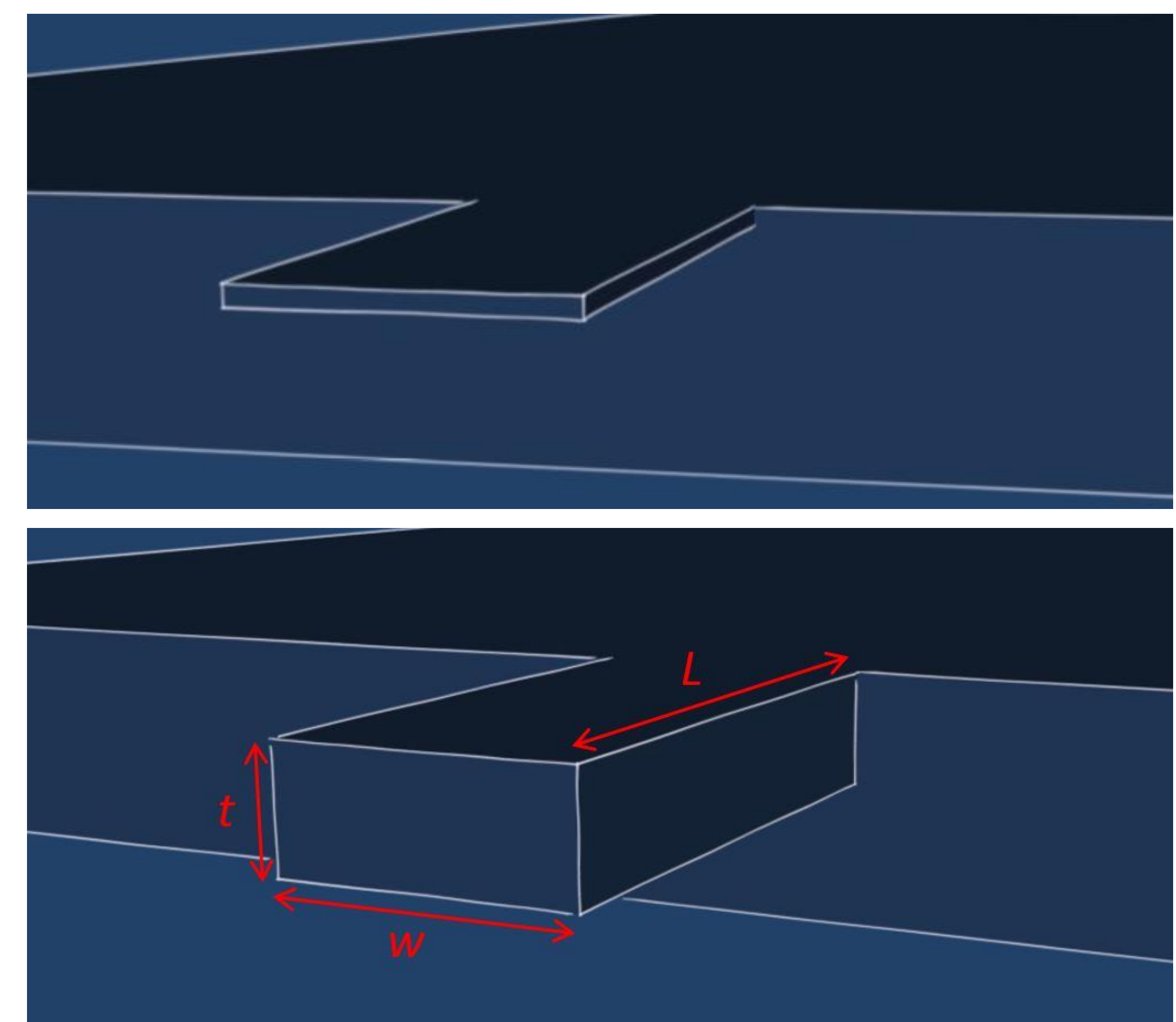


Fig 1. AFM cantilevers: typical design (upper); high stiffness design (lower)

2. Results

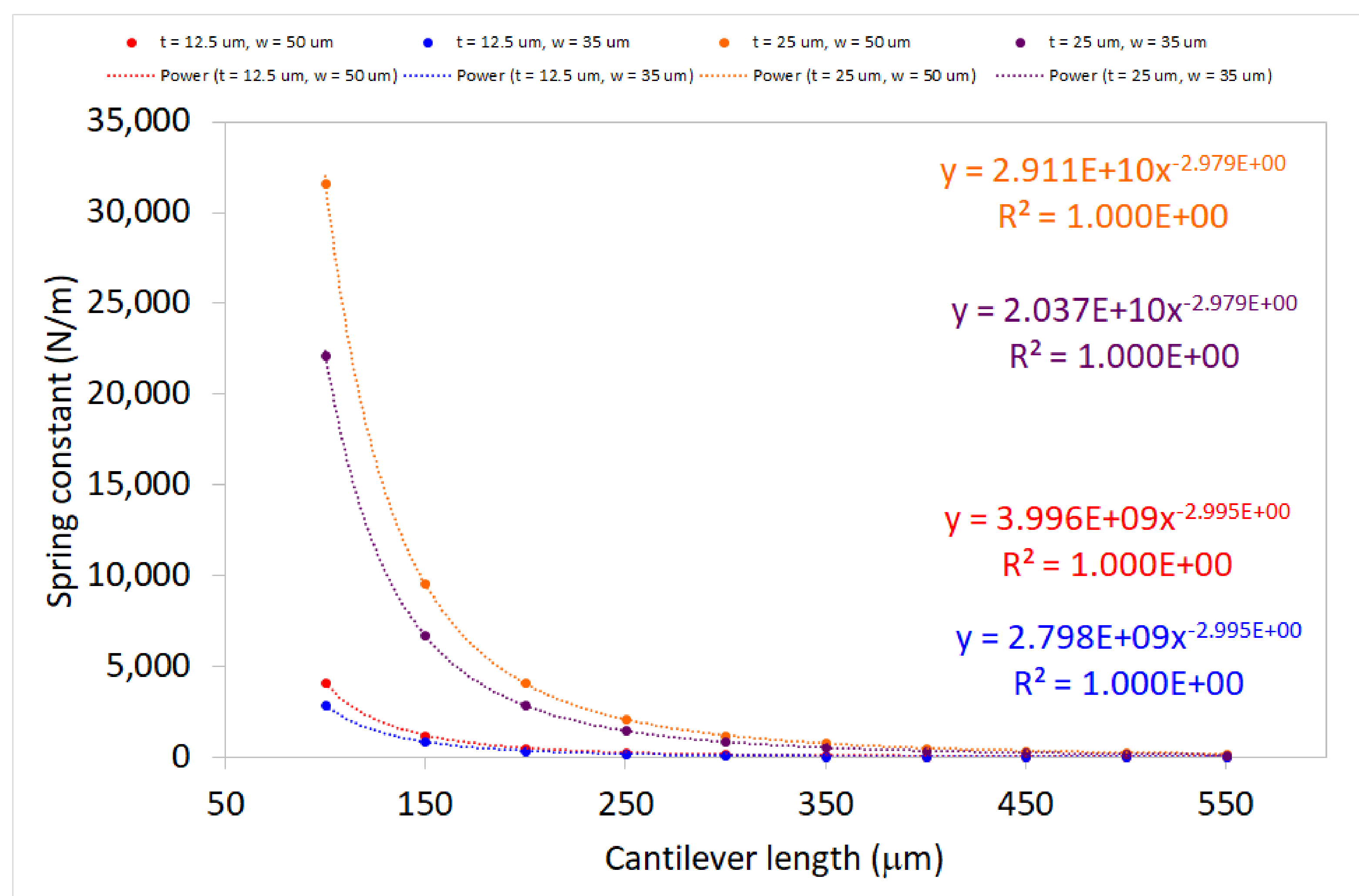


Fig 2. Theoretical spring constants for all cantilevers

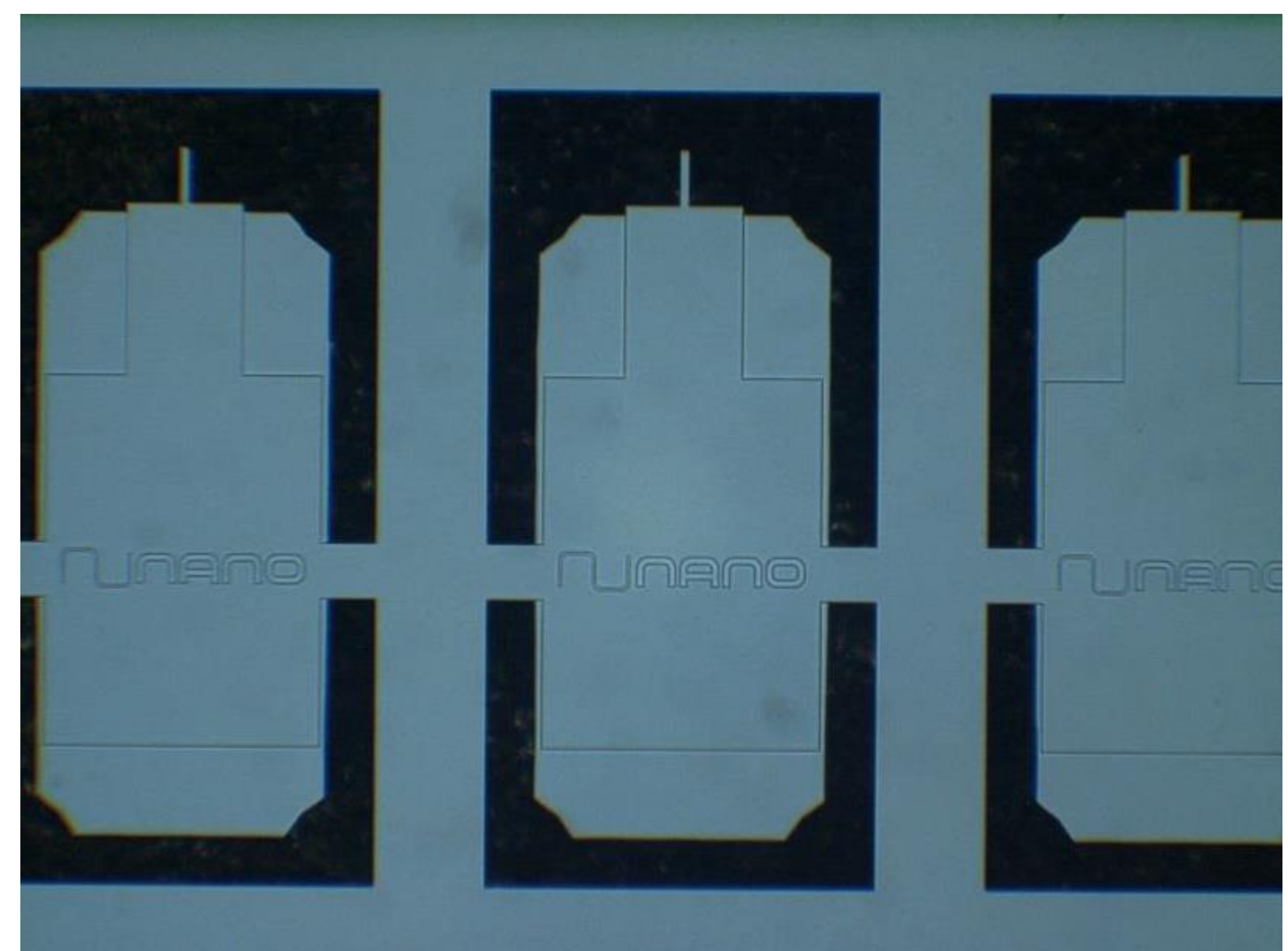


Fig 3. Cantilever probes as manufactured

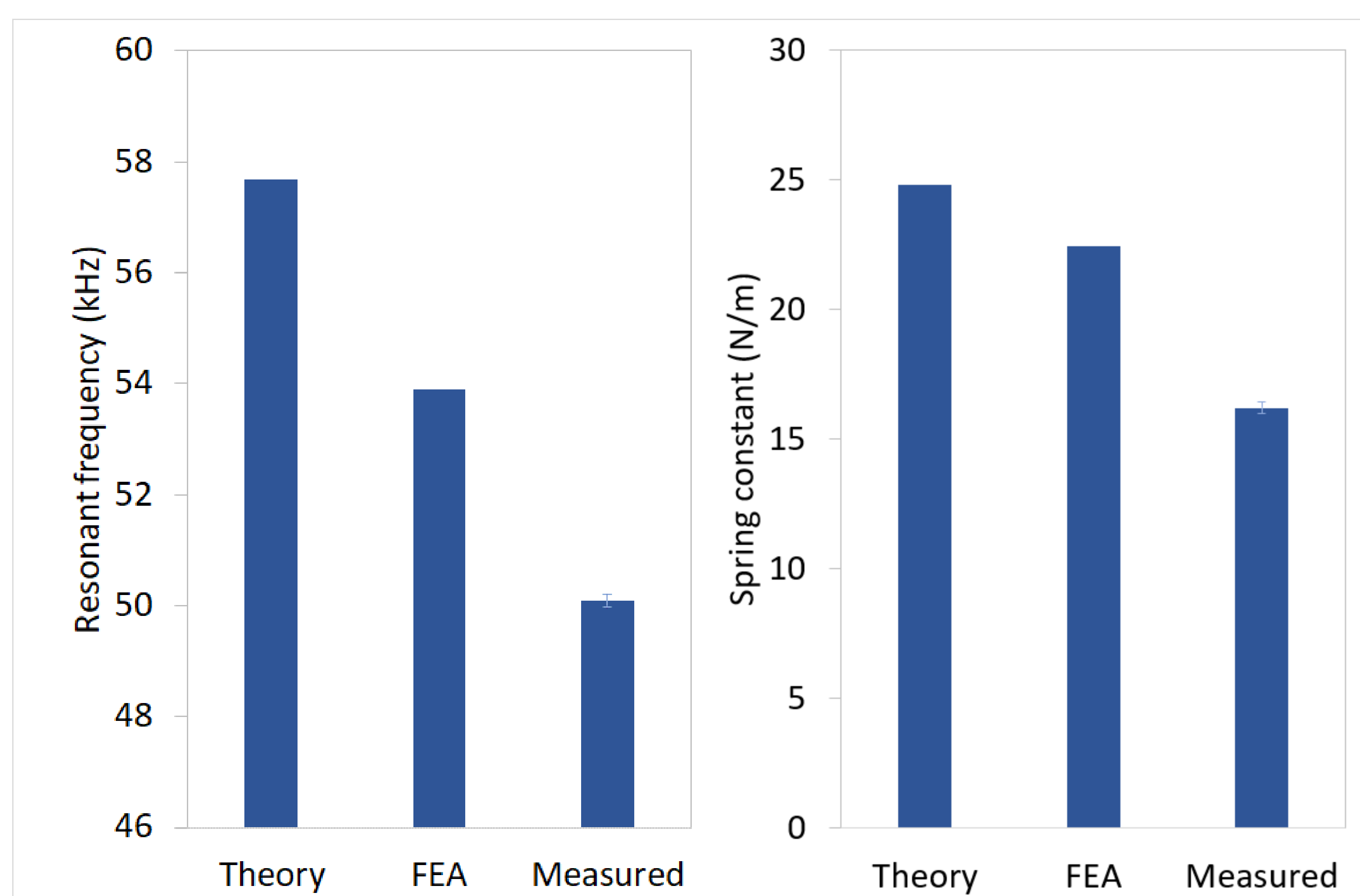


Fig 4. Comparing theory, finite element analysis, and measurements

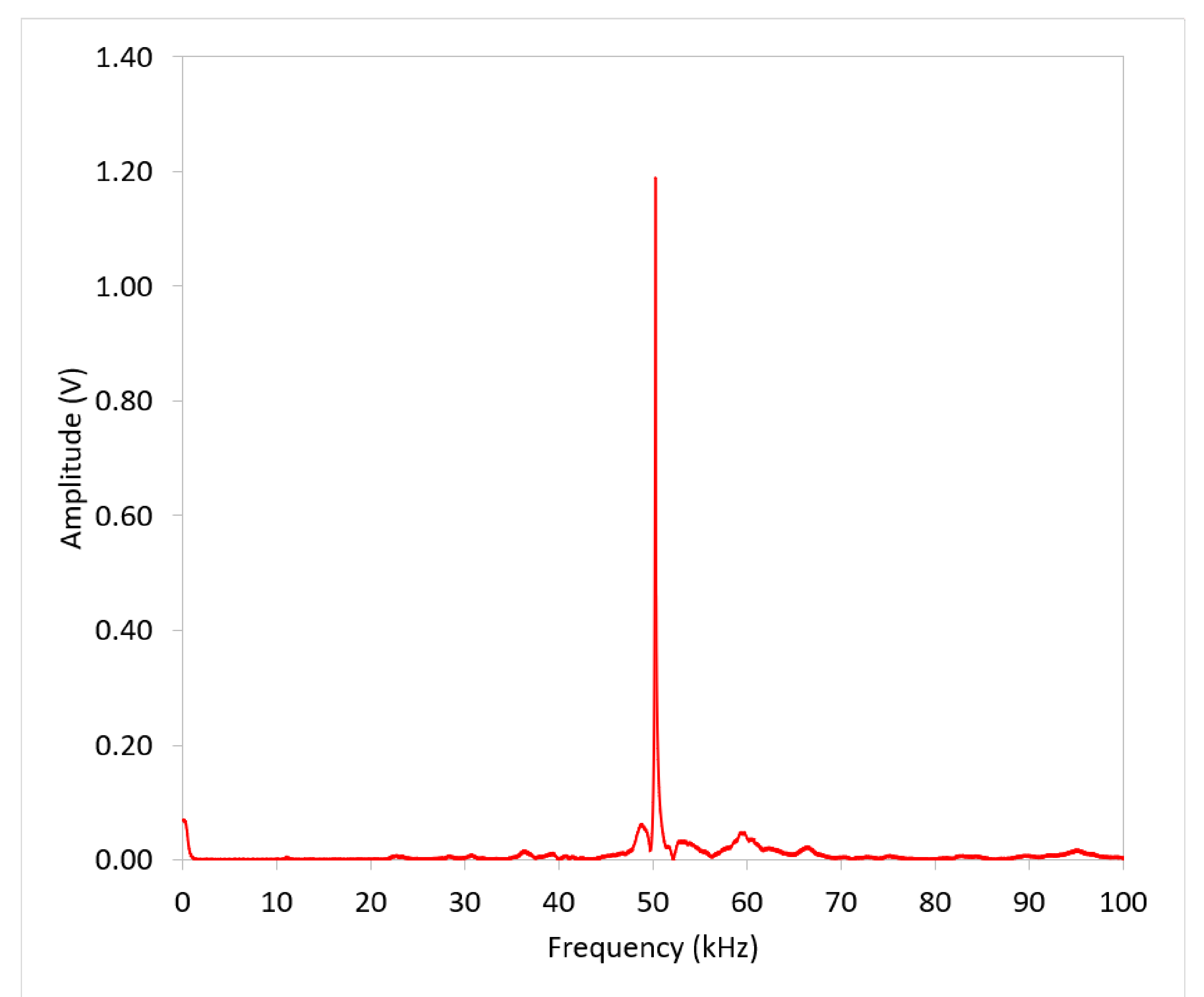


Fig 5. Thermal tune: $L = 550 \mu\text{m}$, $w = 50 \mu\text{m}$, $t = 12.5 \mu\text{m}$

3. Future Work

We are currently calibrating the entire range of cantilevers, comparing theory, finite element analysis, and measurement results. Given that thickness is difficult to measure quickly and accurately, efforts will focus on accurately estimating the cantilever spring constant from the resonant frequency, assuming the length and width are known. Studies exploring the suitability of the cantilevers for tribological testing have generated encouraging results. **We are actively seeking opportunities for collaboration and innovation with materials characterisation researchers and the AFM user community.**

References

- [1] Binnig, G.; Quate, C.F.; Gerber, C.; *Phys. Rev. Lett.*, **1986**, *56*, 930-933.
- [2] Butt, H.-J.; *Biophys. J.*, **1991**, *60*, 777-785.
- [3] Butt, H.-J.; *Biophys. J.*, **1991**, *60*, 1438-1444.
- [4] Ducker, W.A.; Senden, T.J.; Pashley, R.M.; *Nature*, **1991**, *353*, 239-241.
- [5] Ducker, W.A.; Senden, T.J.; Pashley, R.M.; *Langmuir*, **1992**, *8*, 1831-1836.
- [6] Weisenhorn, A.L.; Maivald, P.; Butt, H.-J.; Hansma, P.K.; *Phys. Rev. B*, **1992**, *45*, 11226-11232.
- [7] Ducker, W.A.; Xu, Z.; Israelachvili, J.N.; *Langmuir*, **1994**, *10*, 3279-3289.
- [8] Cleveland, J.P.; Manne, S.; Bocek, D.; Hansma, P.K.; *Rev. Sci. Instrum.*, **1993**, *64*, 403-405.
- [9] Neumister, J.M.; Ducker, W.A.; *Rev. Sci. Instrum.*, **1994**, *65*, 2527-2531.
- [10] Senden, T.J.; Ducker, W.A.; *Langmuir*, **1994**, *10*, 1003-1004.
- [11] Bowen, J.; Cheneler, D.; Walliman, D.; Arkless, S.G.; Zhang, Z.; Ward, M.C.L.; Adams, M.J.; *Meas. Sci. Technol.*, **2010**, *21*, 115106.